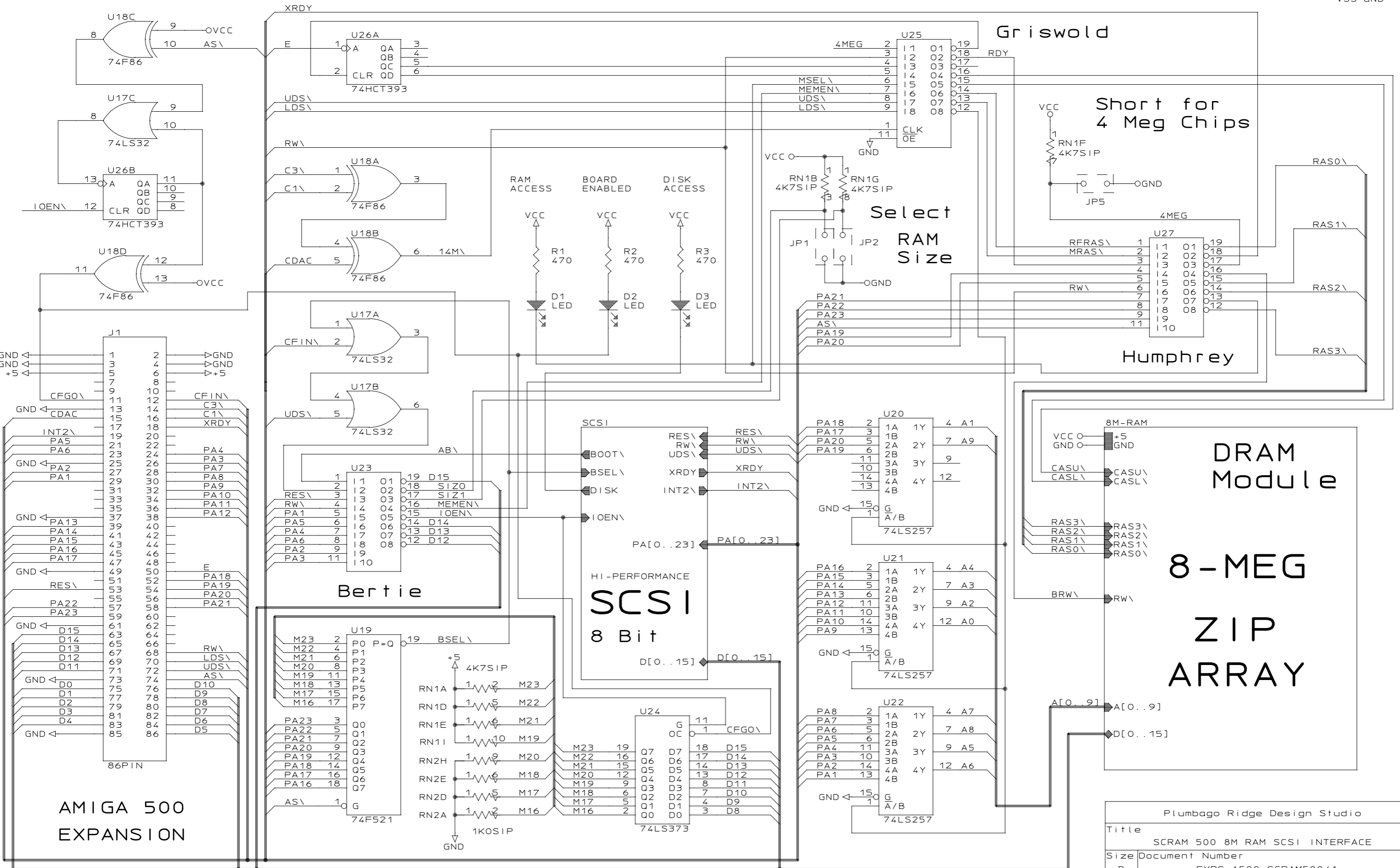
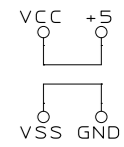


SCRAM 500

8 Meg RAM / 8 Bit SCSI



Griswold

Short for 4 Meg Chips

Select RAM Size

Humphrey

DRAM Module

8-MEG ZIP ARRAY

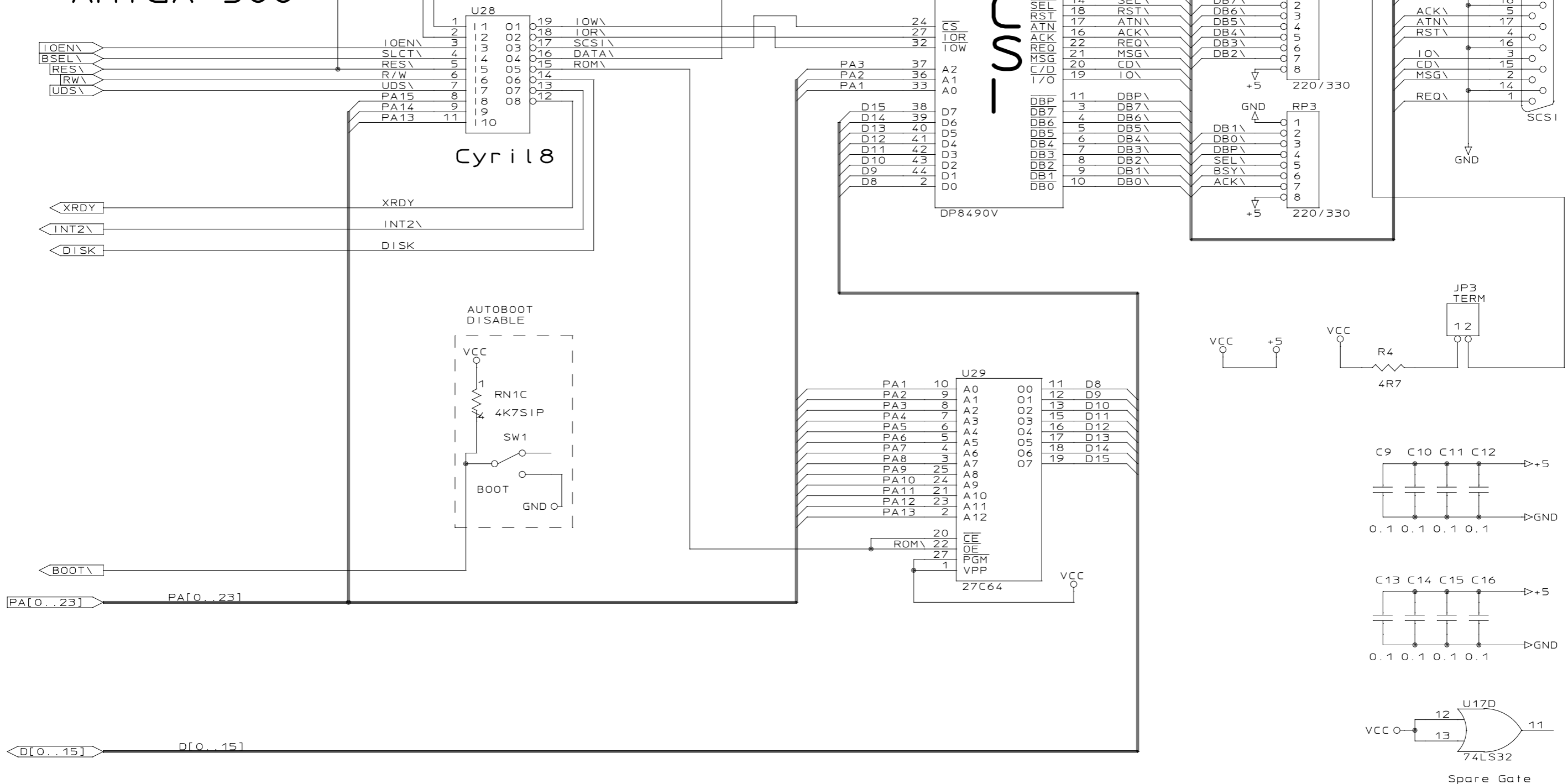
Bertie

HI-PERFORMANCE SCSI 8 Bit

AMIGA 500 EXPANSION

Plumbago Ridge Design Studio		
Title SCRAM 500 8M RAM SCSI INTERFACE		
Size B	Document Number EXPS-A500-SCRAM500/1	REV 2
Date: October 31, 1991	Sheet 1 of	

BUSS SCSI for the AMIGA 500

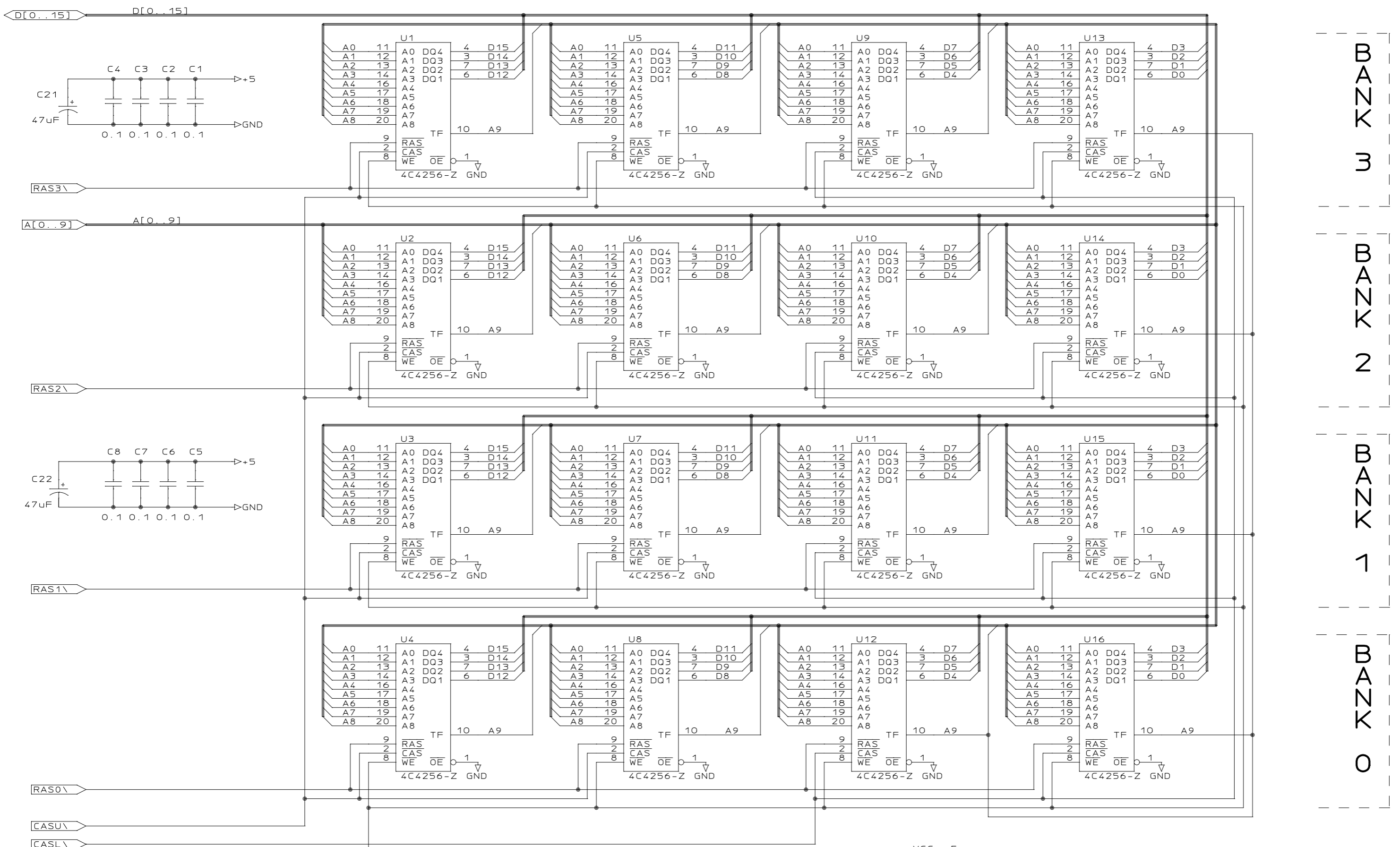


SCRAM 500 8 bit SCSI controller

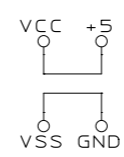
Plumbago Ridge Design Studio		
Title SCRAM 500 SCSI Adapter		
Size B	Document Number EXPS-A500-SCRAM500/2	REV 2
Date: October 31, 1991	Sheet 2 of	

+5 — OVCC
 GND — OGND

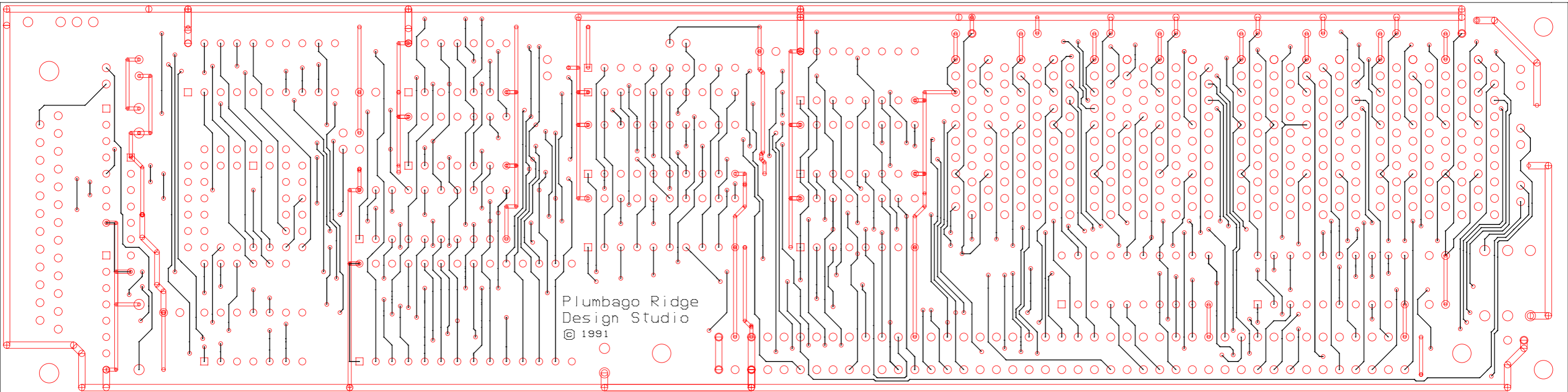
SCRAM 500 256Kx4 / 1Mx4 ZIP DRAMs



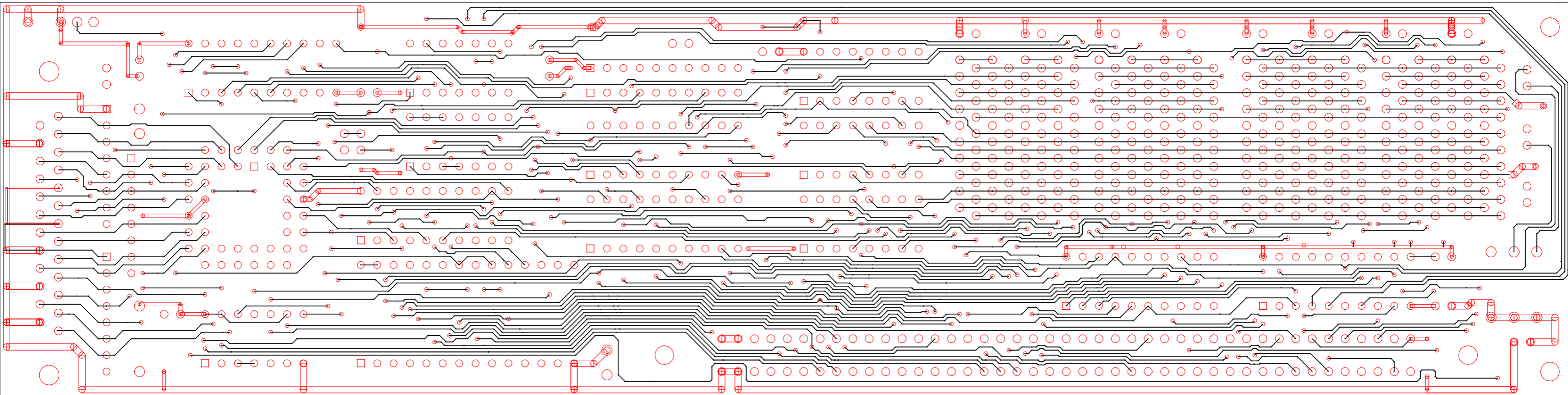
8 Meg ZIP Array



Plumbago Ridge Design Studio		
Title SCRAM 500 8Meg ZIP RAM array		
Size B	Document Number EXPS-A500-SCRAM500/3	REV 2
Date: October 31, 1991	Sheet 3 of	



COMPONENT



SOLDER