

## FDD as Nonvolatile

create a file with subdirectories on the floppy disk:

`prefs/env-archive/sys/nv_location`

the `nv_location` file should contain the path to the location where nonvolatile records will be stored eg.:

`NV:nonvolatile`

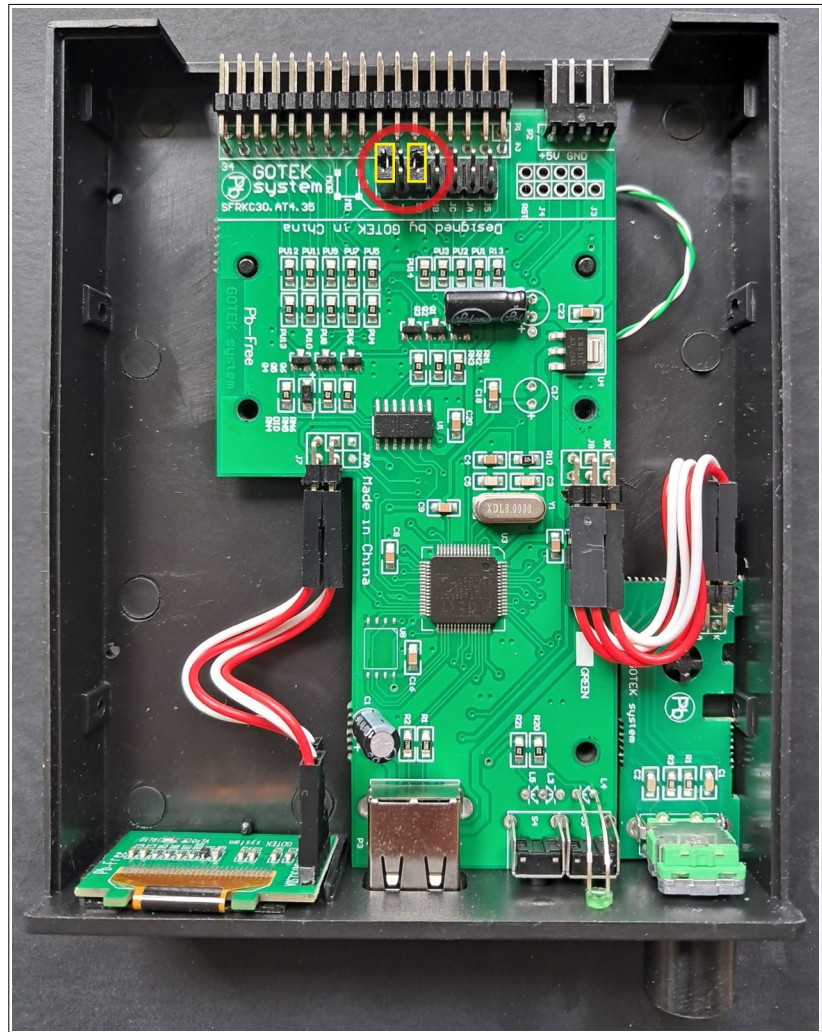
where `NV:` is the name of the diskette and `nonvolatile` is the directory

## 26 Pin FDD (eg.: Teac FD-05HG)

26 pin connector	34 pin connector
6	2
2	8
4	10
10	16
12	18
14	20
16	22
18	24
20	26
22	28
24	30
26	32
8	34
11	GND

## GOTEK settings:

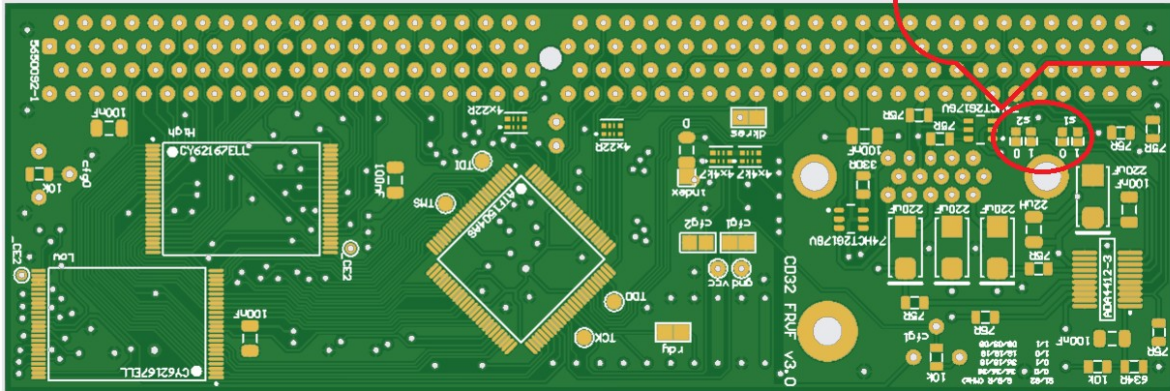
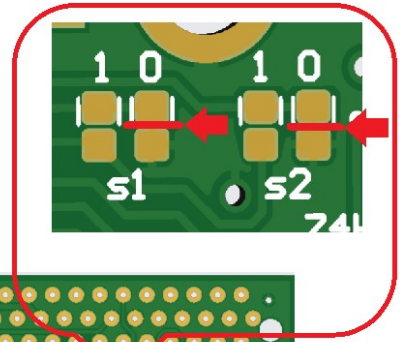
interface = jc  
host = amiga  
pin02 = auto  
pin34 = auto  
write-protect = no  
max-cyl = 255  
side-select-glitch-filter = 0  
track-change = instant  
write-drain = instant  
index-suppression = yes  
head-settle-ms = 12  
motor-delay = 200  
chrst = step  
ejected-on-startup = yes  
image-on-startup = last  
display-probe-ms = 3000  
autoselect-file-secs = 0  
autoselect-folder-secs = 0  
folder-sort = always  
sort-priority = folders  
nav-mode = default  
nav-loop = yes  
twobutton-action = zero  
rotary = full  
indexed-prefix = "DSKA"  
display-type = oled-128x64-rotate  
oled-font = 6x13  
oled-contrast = 143  
display-order = default  
osd-display-order = default  
osd-columns = 40  
display-off-secs = 255  
display-on-activity = yes  
display-scroll-rate = 200  
display-scroll-pause = 2000  
nav-scroll-rate = 80  
nav-scroll-pause = 300  
step-volume = 10  
notify-volume = 1  
da-report-version = ""  
extend-image = yes



SFRKC30.AT4.35 (FlashFloppy)

# VGA configuration

If you are changing the RGB filter configuration, cut the paths first!



S1	S2	Y/G Cutoff	Pb/B Cutoff	Pr/R Cutoff
0	0	36 MHz	36 MHz	36 MHz
0	1	36 MHz	18 MHz	18 MHz
1	0	18 MHz	18 MHz	18 MHz
1	1	9 MHz	9 MHz	9 MHz

# VGA to SCART

Solder side

